

HEATWAVE CONTROLLED LOAD 2 WIFI CONTROL

HUNTER VALLEY REGION NSW

1.6.2021

Tailgate
delivery to
kerb



Ceramic core blocks located on base of pallet – Heater casing in carton- Strapped and shrink wrapped

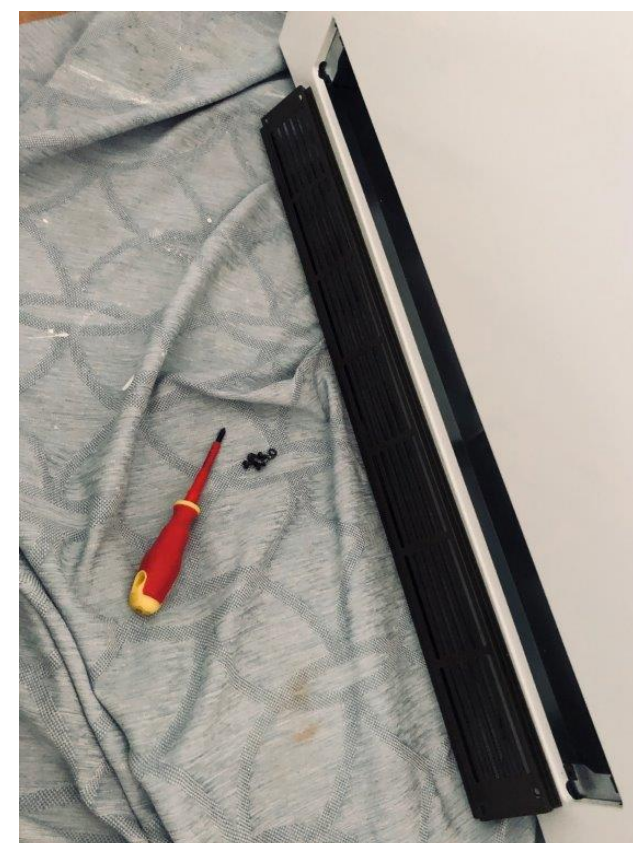
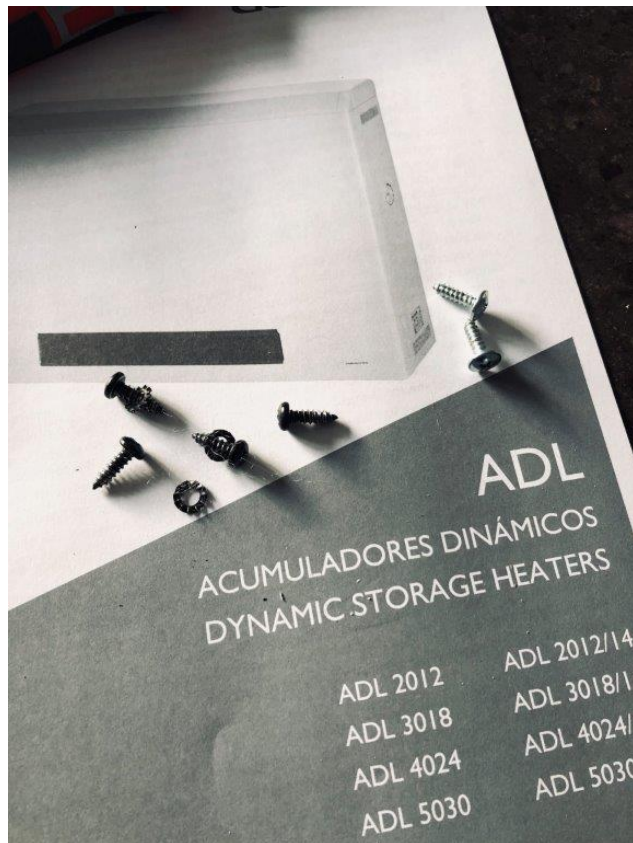


Casing and
Core bricks
placed near
final location
of heater.

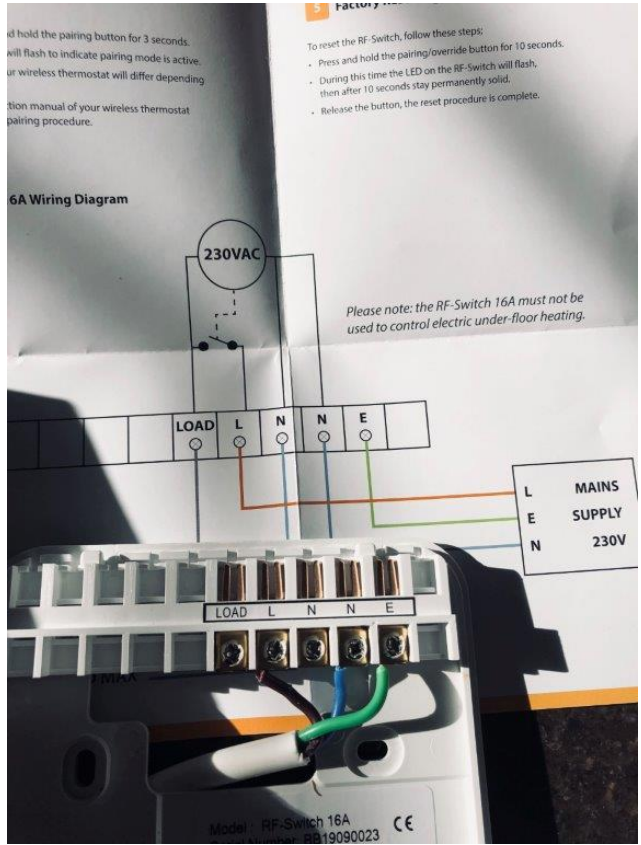


Upright carton
contains
installation
manual, electric
elements and
casing cover
strips



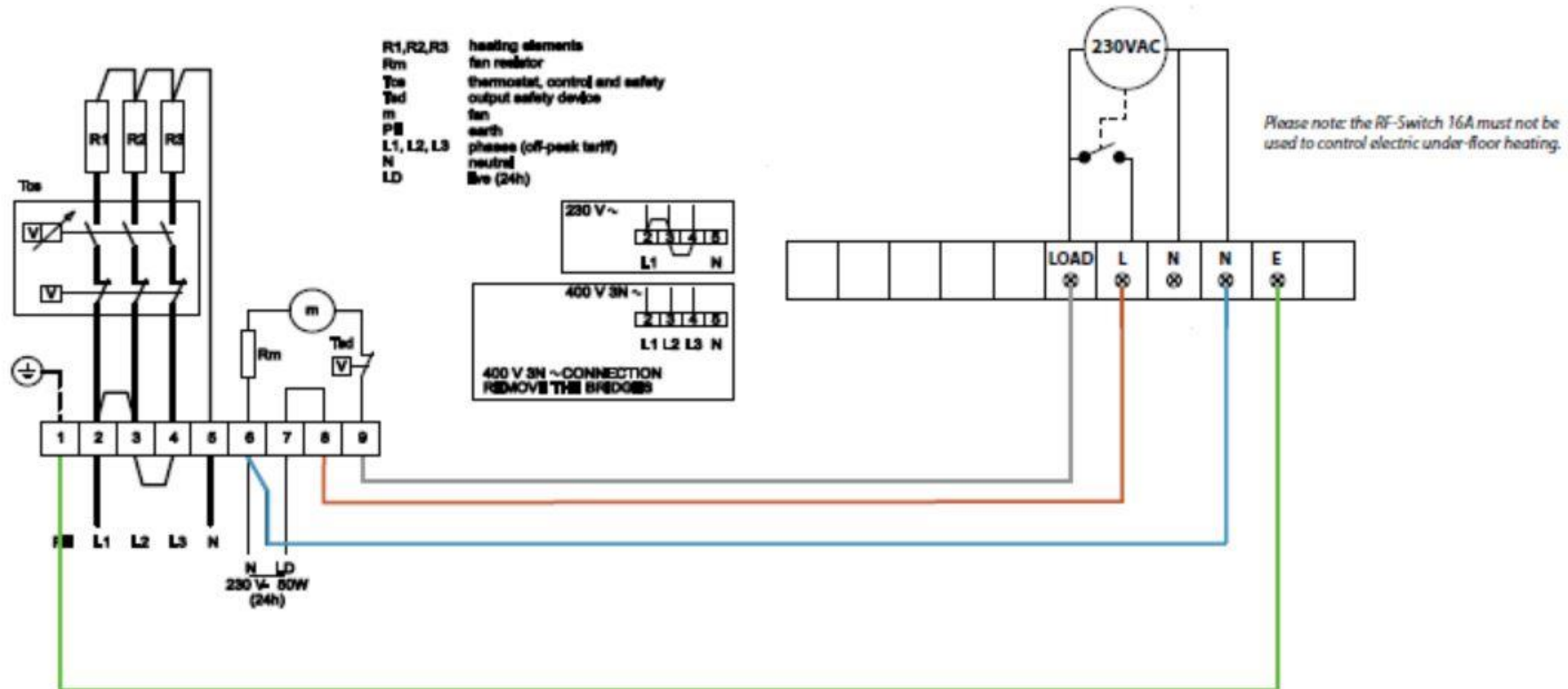


Heater casing ready to install. Remove 4 black screws from outlet grille and 2 chrome screws from base of front panel

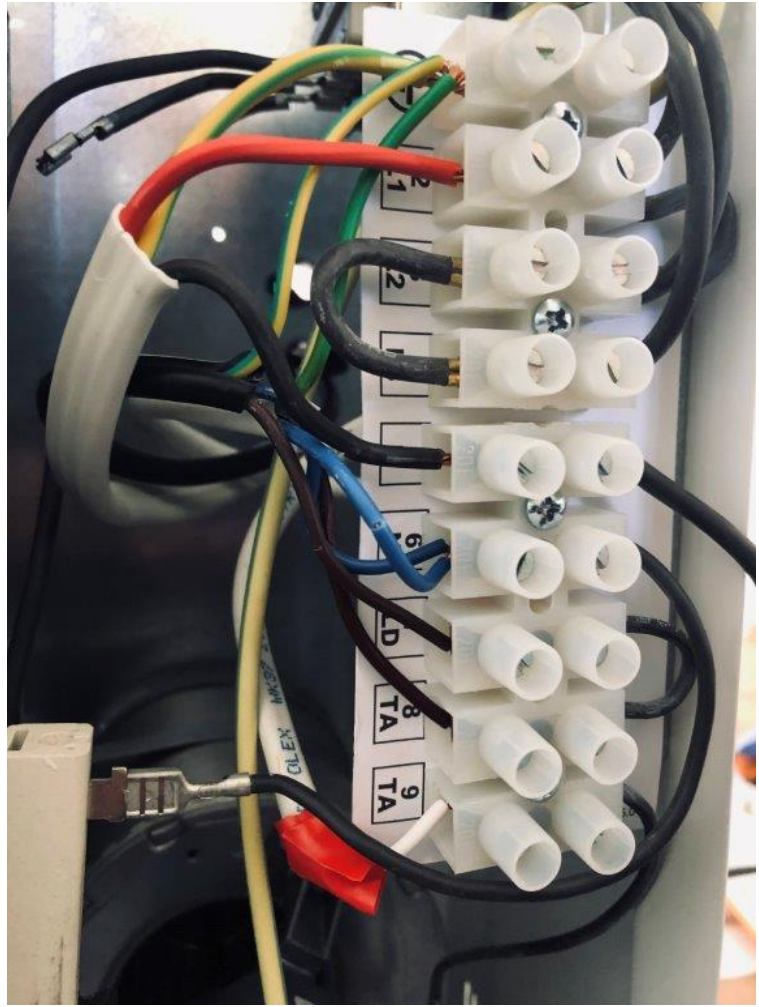


Installation of Heatmiser RF switch 16A Wifi & NeoAir room temperature controller

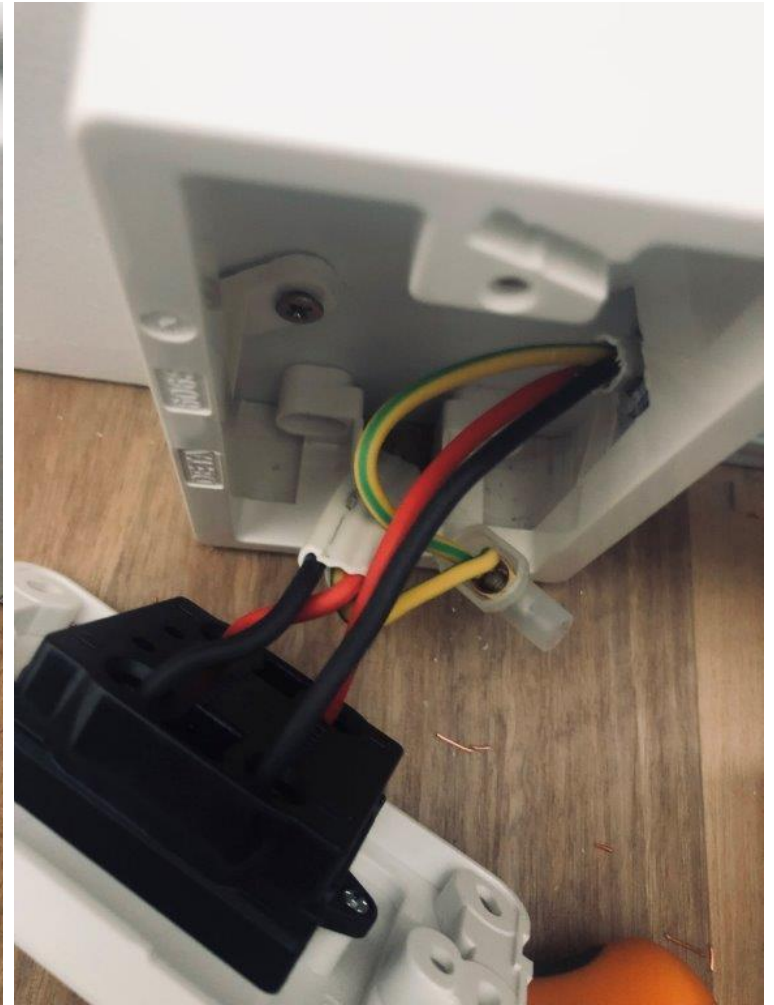
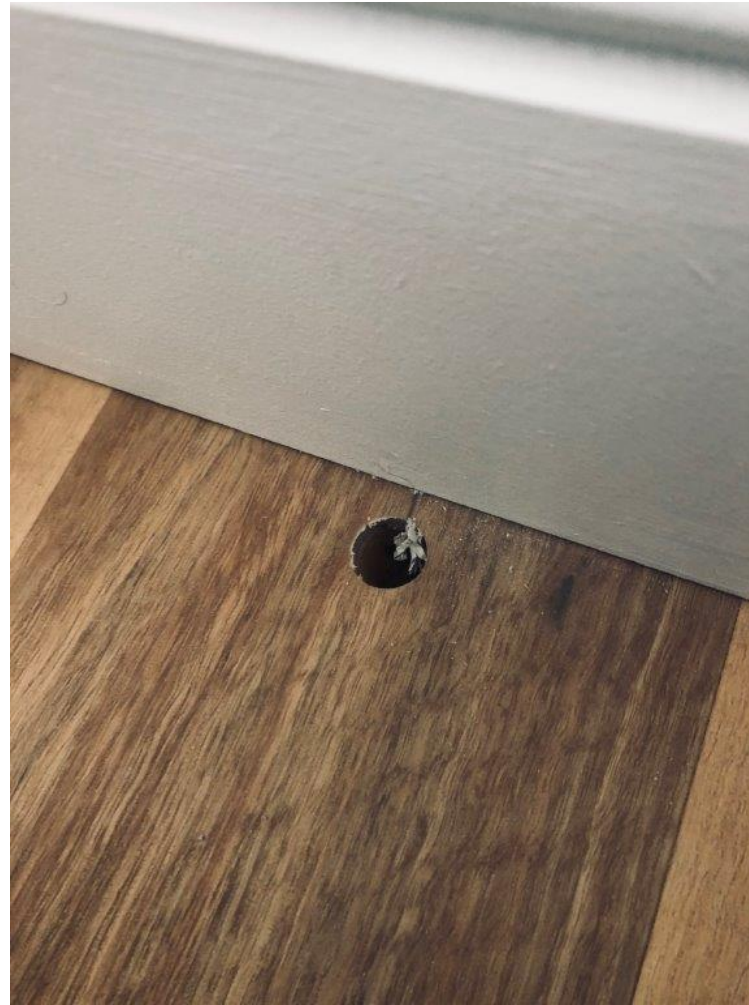
Wiring diagram RF switch to Heatwave



Wiring from
RF Switched
mounted on
Heatwave
heater



Offpeak
cable entry
through floor
via Wall box





GPO lead (Black) and Flex Con to DP Isolator 25A



Side covers and fix to wall under top cover

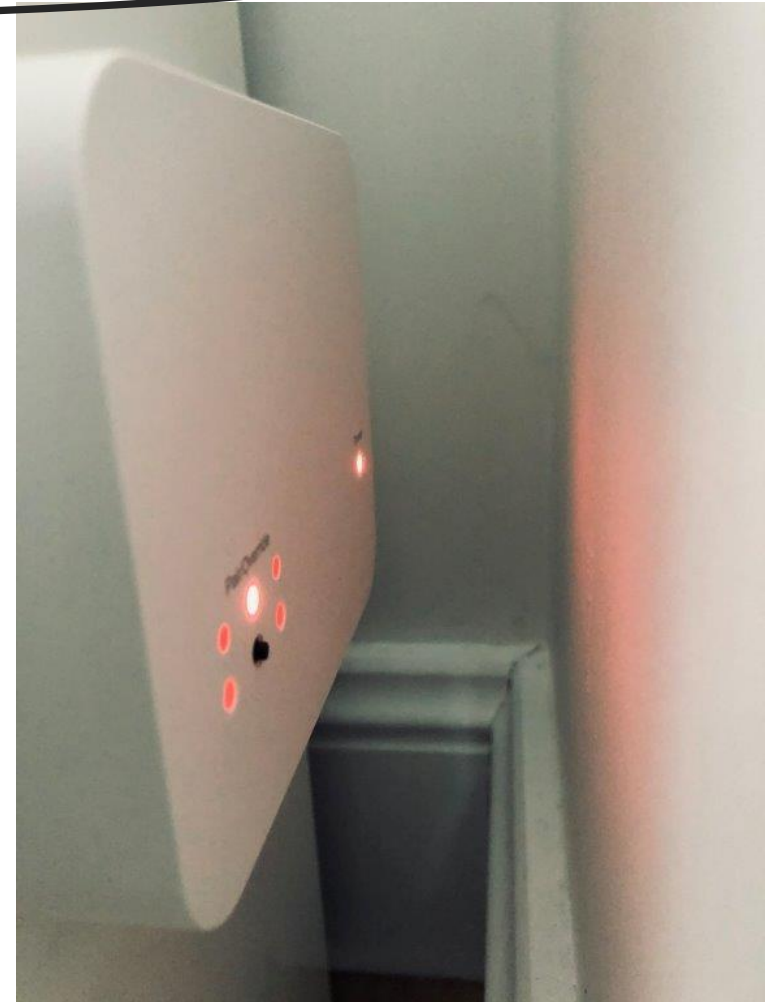
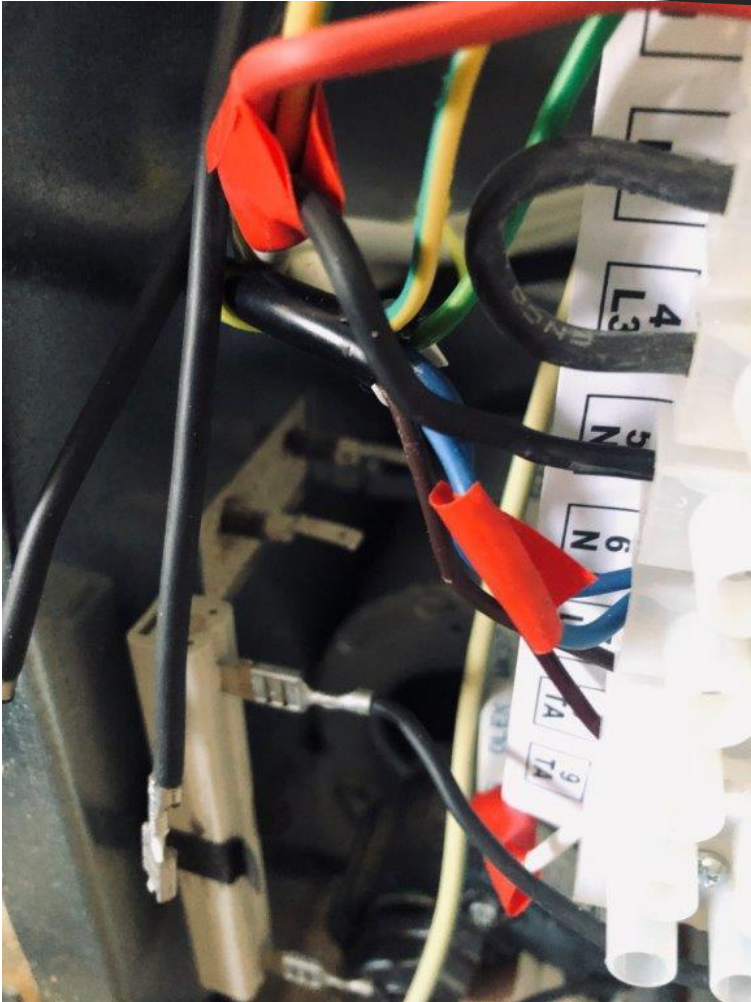


Installing core bricks
from sides toward
middle



Fit electric elements to each level (3 total)

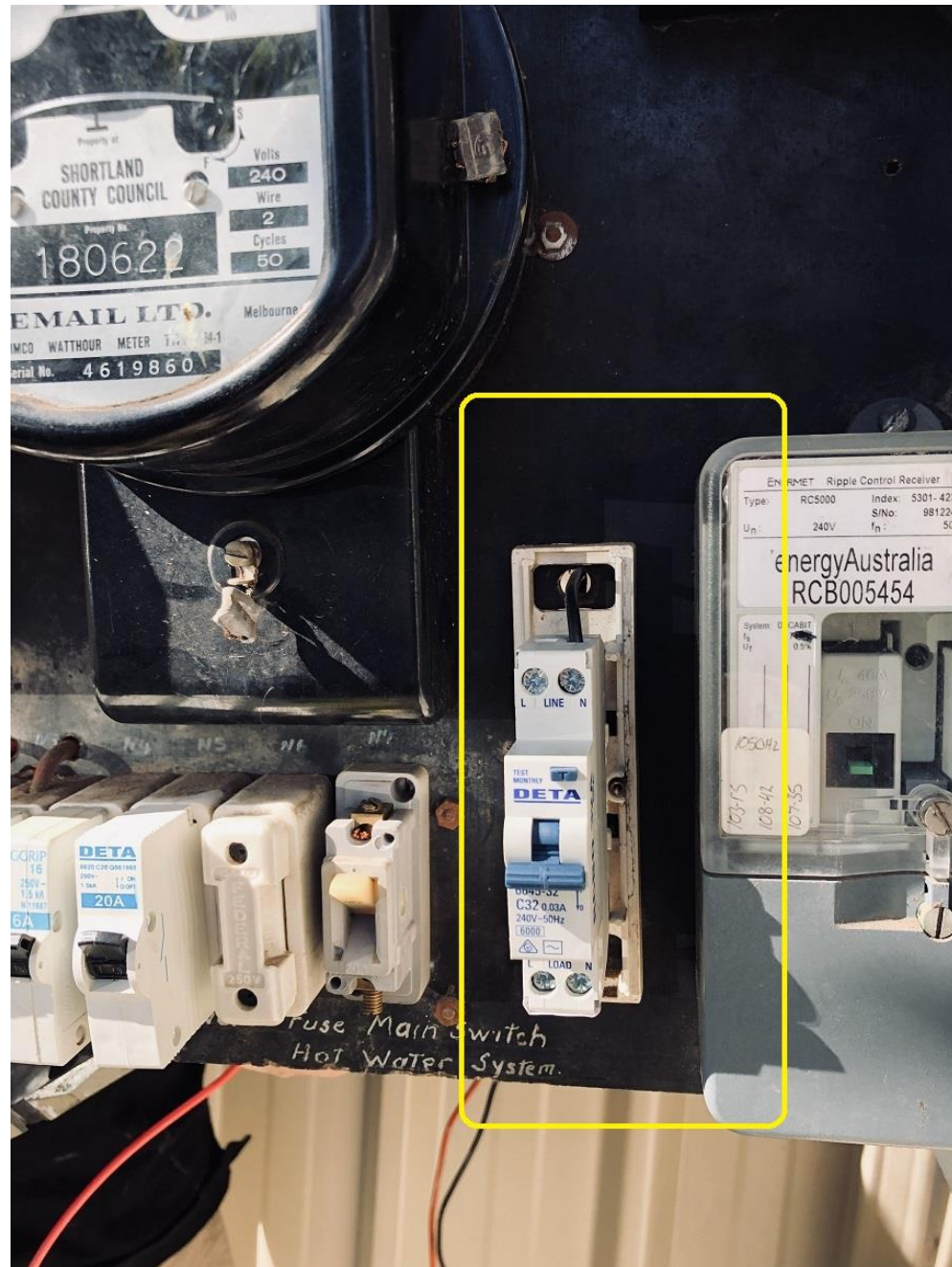
Fit spade connectors to elements & test RF switch operates fan on/off cycles





Completed installation – Labels applied

Install 20A
RCBO to
Controlled
load 2 circuit
as per
Australian
wiring rules



Thermal
Image - Fully
charged

